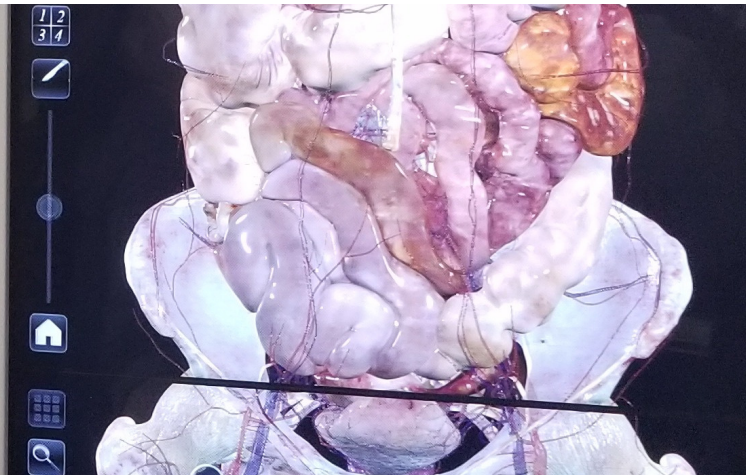


ANATOMAGE TABLE OPEN OFFICE HOURS



DIGITAL SCHOLARSHIP LAB

Michigan State University Libraries



THE BODY EXPANDED

Come check out the Anatomage Table! The Anatomage Table is the only fully segmented real human 3D anatomy platform, and we'll be holding open office hours for you to check out, test it out, and think about how you can use it for your curriculum, courses, research support, and to enhance the student experience. Staff will be on hand to answer questions and provide demonstrations.

HOURS OF SERVICE

- January 18, 1pm-3pm
- February 22, 1pm-3pm
- March 15, 1pm-3pm
- April 19, 1pm-3pm

Consultations and demonstrations will be conducted at the table's location in the DSL.



SCAN & LEARN MORE

For additional information, please see our
Anatomage Guide.



Digital Scholarship Lab | Michigan State University Libraries | 2-West
366 W, Circle Drive, East Lansing MI 48824 | 517-355-4104

<https://digitalscholarshipilab.msu.edu> | DSLdesk@lib.msu.edu